

Our Roadmap to Sustainability – FOR A BETTER FUTURE



For ALPMA, sustainability means acting responsibly for current and future generations. At the same time, we are also creating the conditions for sustainable, long-term corporate success. On the way there, we have committed ourselves to a concrete roadmap. It is linked to requirements and intermediate stops, which we continuously pursue. Here is an overview of our commitment:

Social engagement



Both ALPMA in Chiemgau and our LTH branch in Dresden are deeply rooted in their regions. We feel committed to the people, tradition and social responsibility here in the surrounding area.

Long-standing employees



Our long-standing employees are a decisive factor in ALPMA's success. We are proud of the fact that our employees have been associated with the family for generations – a fact that is rare these days.

We work: SUSTAINABLE

More sustainability can also be achieved through adjustments to working conditions. The ALPMA employees have the possibility to work in a home office if required. In addition, business travels are more and more replaced by digital meetings.

Cycle to Work to help the climate crisis

With the job bike offer, ALPMA encourages every employee who can to come to work without a car. Already 1/4 of all eligible employees take advantage of this offer!

We say: keep it up!

Molds in the recycling circuit

All products of our mold manufacturer Servi Doryl - whether made of plastic or aluminum - can be fed into the recycling circuit. Thus, we support the safety of raw materials and reduce the negative impact on the environment to a minimum.

Clever: electricity from own production



Through photovoltaic systems installed on the roofs of the assembly hall and the administration building in Rott am Inn, we want to produce our own electricity as much as possible in the future.

Green energy from the region

Here at the „Rott am Inn“ site, we use 100% renewable energy from the region and are thus taking a significant step towards a climate-neutral future.

Energy intensity reduced by 20 %

Our goal is to continuously reduce energy consumption through greater energy efficiency. We have succeeded in doing this in Rott am Inn with a reduction in consumption of around 20 % (2020 compared to 2016). We stay tuned ...

Automation improves the handling of resources

Automation solutions for production processes such as Eagle-Eye – ALPMA's innovative inspection technology with a hit rate of >99 % – mean sustainability, using resources more efficiently.

Food companies increase their product safety and minimize the risk of costly product recalls.

Added value through longer service life of ALPMA machines

Durability is a crucial factor in using resources as efficiently as possible. The long service life of an ALPMA machine or its components means lower costs, less downtime and greater efficiency. In addition, we ensure a worldwide spare parts supply.

International FoodTec Award in Gold for ALPMA FreshPack



ALPMA has now been awarded the International FoodTec Award 2021 in Gold by the DLG for its innovative „FreshPack“ packaging concept - the world's first „butter pack with freshness seal“ Thanks to this innovative packaging concept, the use of plastic packaging for butter and mixed fats can be significantly minimised in the future.

Digitalisation as a tool for sustainable cheese production

Digitalisation is playing an increasingly important role around the globe and will contribute enormously to the promotion of sustainability. For example, the algorithm „OptiYield“ developed by ALPMA ensures permanent monitoring of our cutting machines. OptiYield permanently learns from the data resulting from ongoing operation, evaluates the data in real time and continuously optimises itself. The settings, regardless of the model, are regulated independently to keep the performance at a permanently high level. These fast response times increase the efficiency of the slicers in terms of product utilisation, energy consumption and other aspects, and support the dairy's transition to more sustainable production.

Resource savings through efficient and innovative cheese-making technology

Continuous curd preparation with ALPMA coagulator and bassine system enables a higher cheese yield compared to classic cheese vats. Due to shorter downtimes and careful curd preparation in smaller quantities, less curd fines are produced in the whey. In short: More cheese is produced from less milk.

Reduced water consumption with our RO plants

ALPMA has developed the „AquaECON“ system together with HORPOVEL®. We can use it to reduce the amount of water needed to clean an RO plant by 20 % to 35 %. Our engineers use precise measurements to ensure that the cleaning is just as effective as with higher water consumption.

Reduced water consumption with all membrane filtration plants

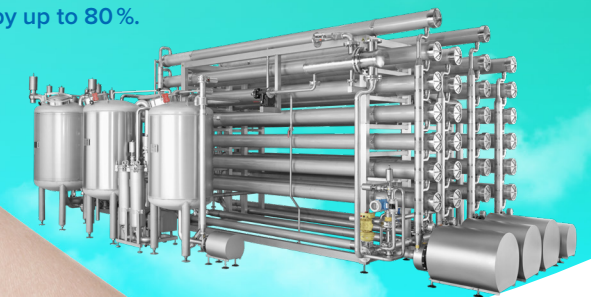
ALPMA has developed the Smart Rinsing System. It allows us to reduce the amount of water needed to clean a membrane filtration system by 20 %.

Reduction of product losses in membrane filtration plants

With the Smart Excavation System, ALPMA increases the recovery of product at the end of each production cycle. Special valve circuits and adapted control of pumps ensures a high proportion of usable product is obtained before the product residues have to be rinsed out.

Reduction of road traffic through concentration of milk and whey

Our engineers have developed a membrane system for concentrating milk and whey that enables us to achieve a total solids content in whey of 30 % and in skim milk of up to 36 %. As a result, the number of tank trucks on the road can be reduced by up to 80 %.



We cannot change the wind,
but we can set the sails differently.
– Aristoteles



ALPMA

www.alpma.com/about-us/sustainability